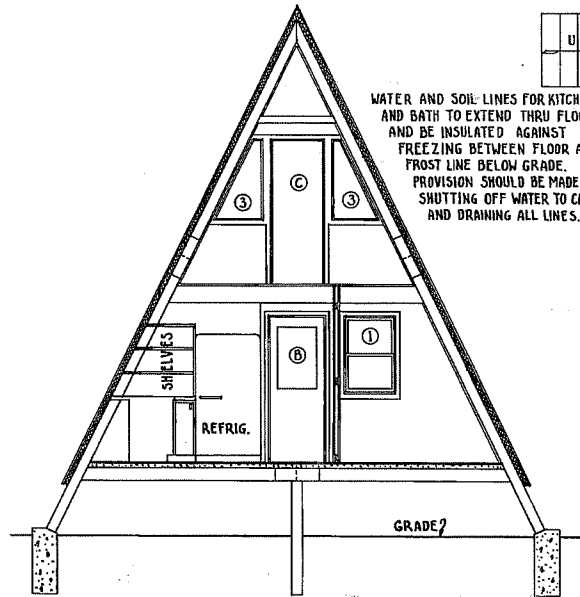
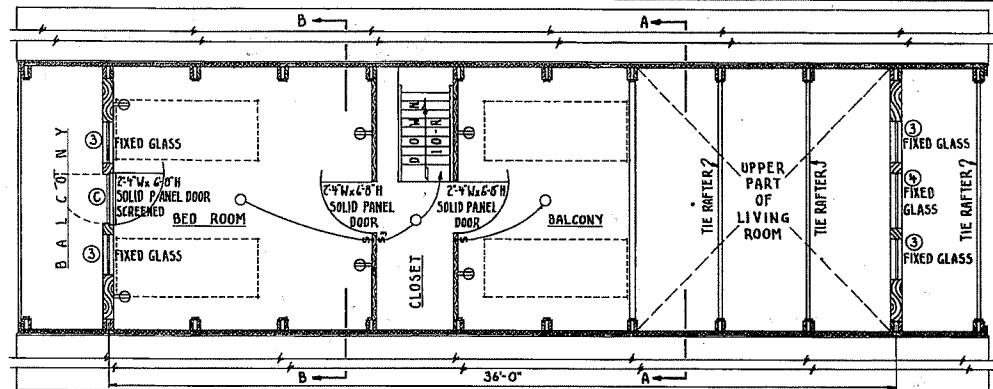


SECTION A-A
SCALE 1/4" = 1'-0"



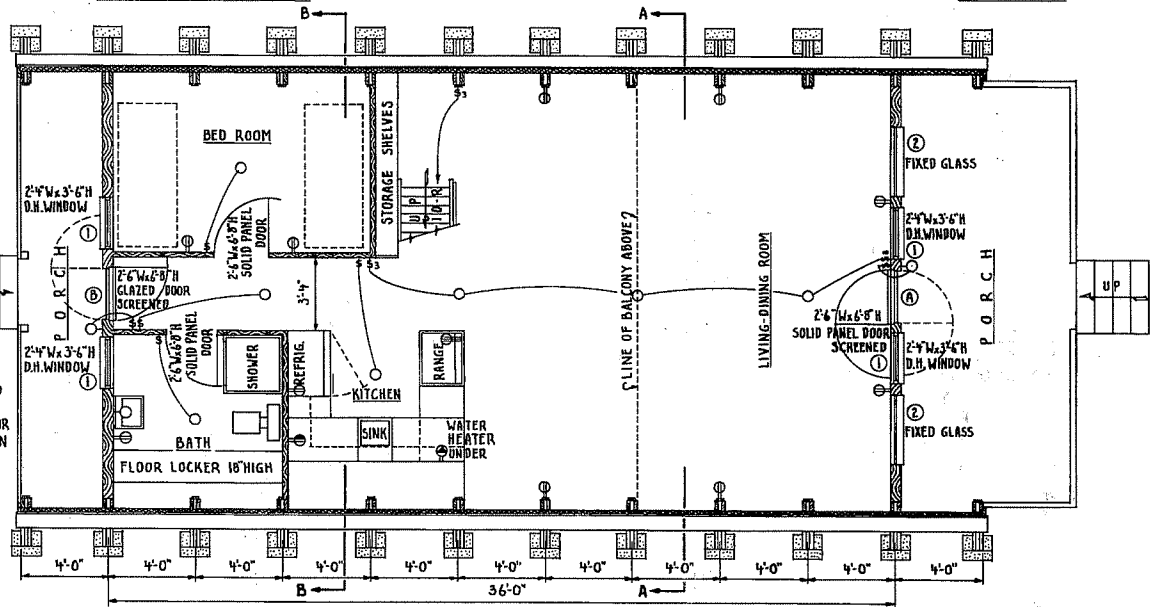
SECTION B-B
SCALE 1/4" = 1'-0"

WATER AND SOIL LINES FOR KITCHEN AND BATH TO EXTEND THRU FLOOR AND BE INSULATED AGAINST FREEZING BETWEEN FLOOR AND FROST LINE BELOW GRADE. PROVISION SHOULD BE MADE FOR SHUTTING OFF WATER TO CABIN AND DRAINING ALL LINES.



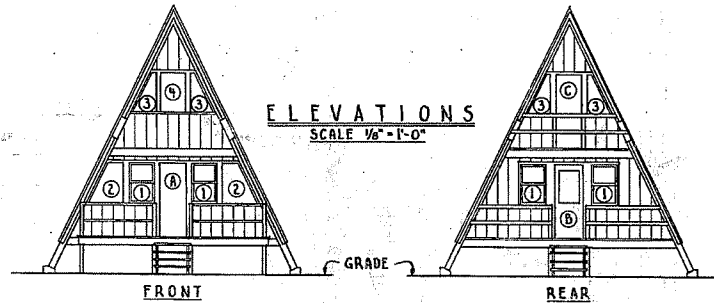
SECOND FLOOR PLAN

SCALE 1/4" = 1'-0"



FIRST FLOOR PLAN

SCALE 1/4" = 1'-0"



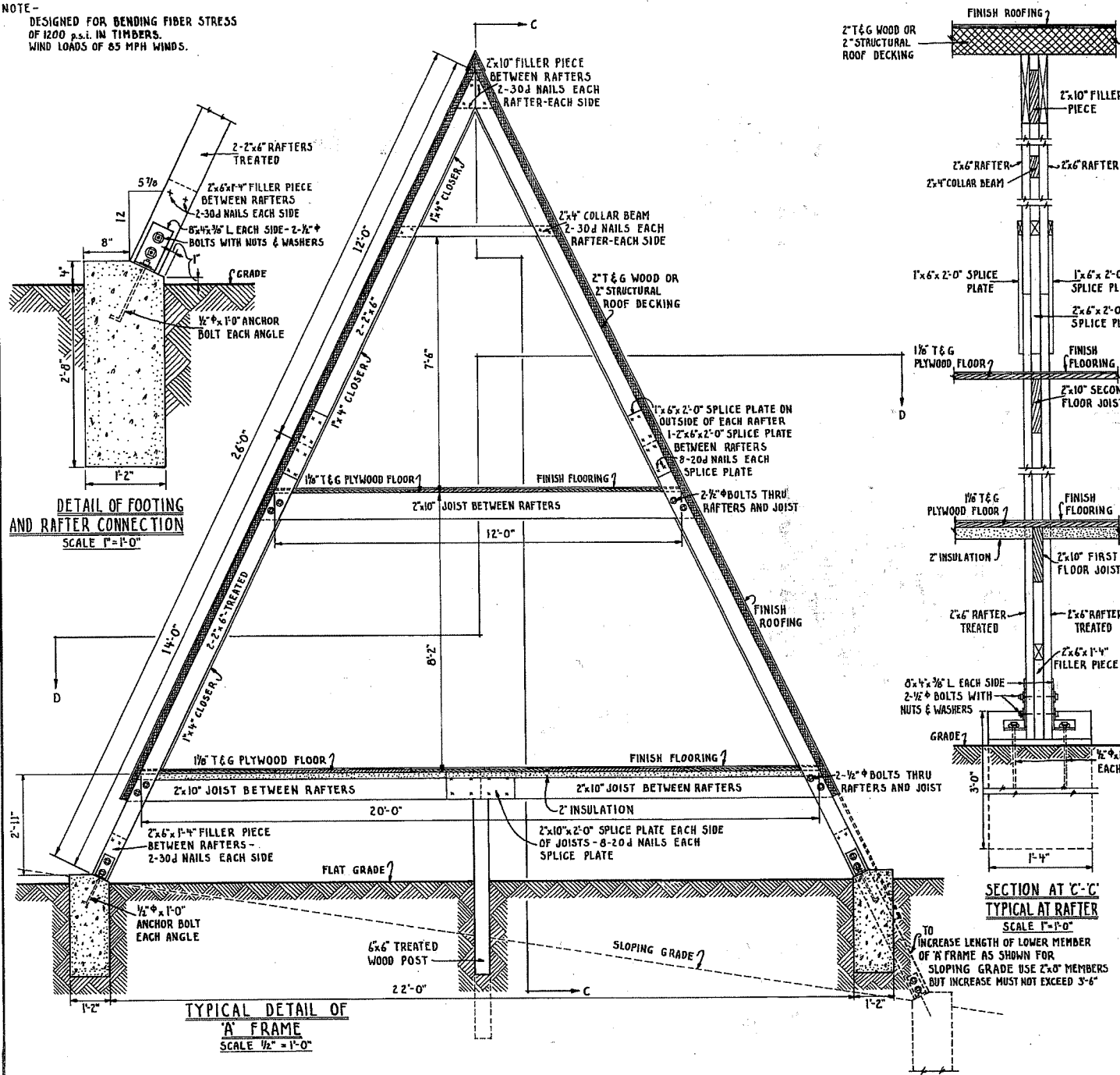
ELEVATIONS
SCALE 1/8" = 1'-0"

FRONT

REAR

COOPERATIVE EXTENSION WORK IN AGRICULTURE AND HOME ECONOMICS		
STATE OF NORTH DAKOTA NORTH DAKOTA STATE UNIVERSITY DEPARTMENT OF AGRICULTURE AND APPLIED SCIENCE		
AND UNITED STATES DEPARTMENT OF AGRICULTURE COOPERATING		
36'-0" A FRAME CABIN		
USDA 1963	EX. 5965	SHEET 1 OF 3
<i>A small 6 1/2 x 11 drawing available</i>		

NOTE -
 DESIGNED FOR BENDING FIBER STRESS
 OF 1200 p.s.i. IN TIMBERS.
 WIND LOADS OF 85 MPH WINDS.



DETAIL OF FOOTING
 AND RAFTER CONNECTION
 SCALE 1"=1'-0"

TYPICAL DETAIL OF
 'A' FRAME
 SCALE 1/2"=1'-0"

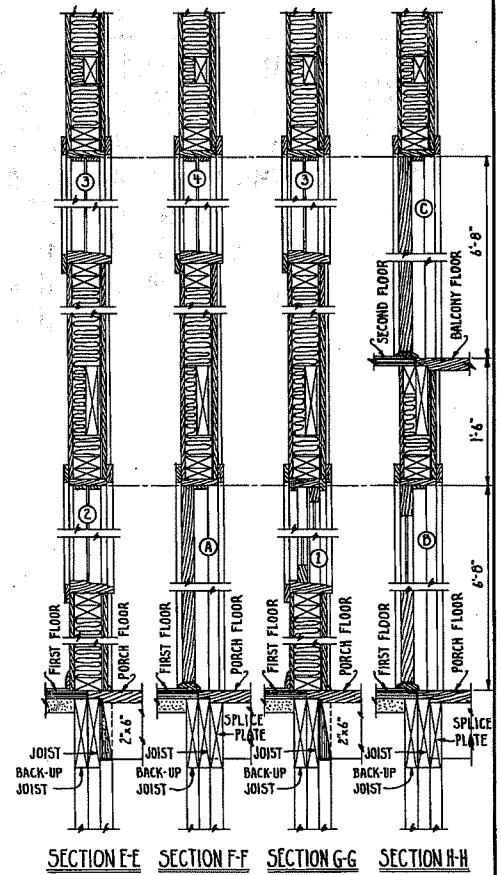
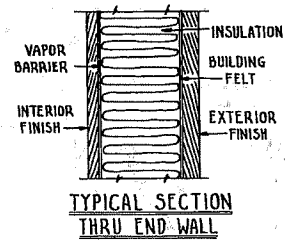
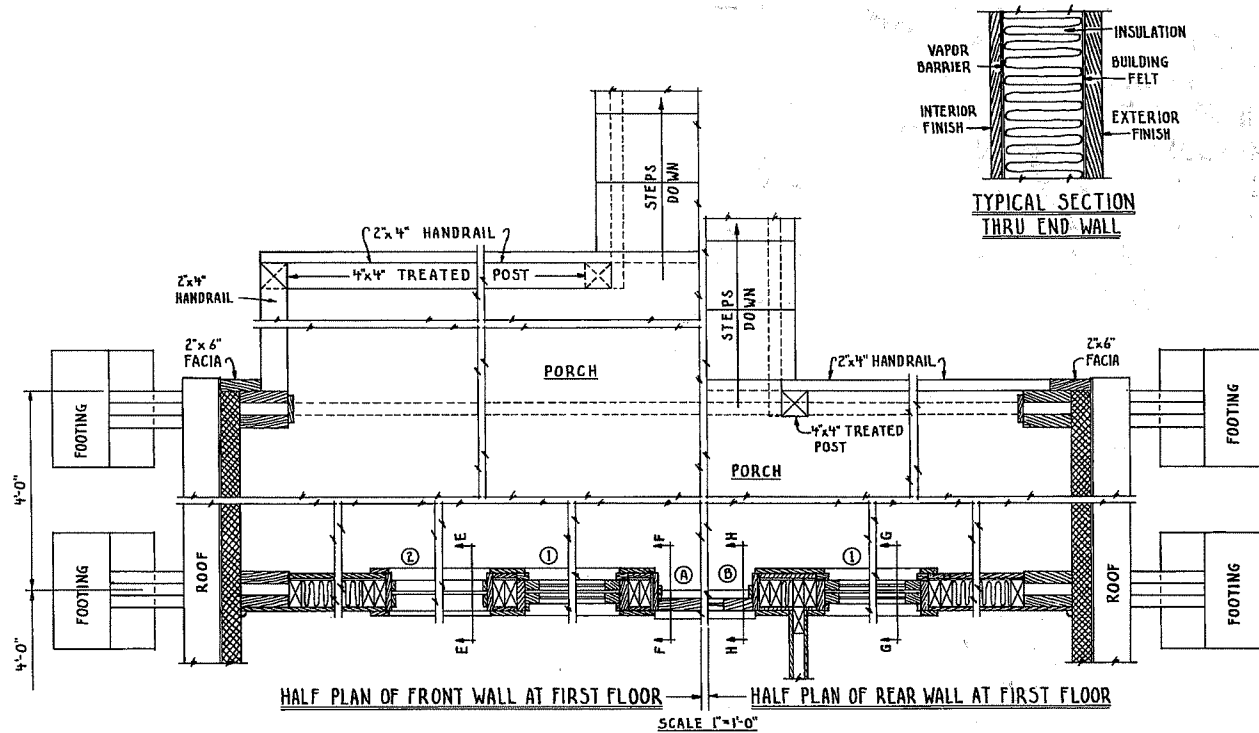
SECTION AT 'C-C'
 TYPICAL AT RAFTER
 SCALE 1"=1'-0"

PLAN AT 'D-D'
 TYPICAL AT RAFTER
 SCALE 1"=1'-0"

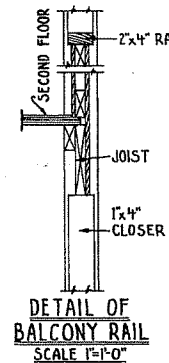
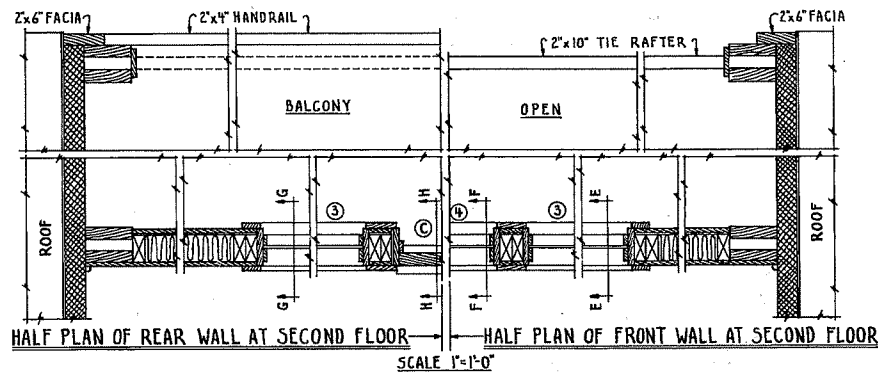
TO INCREASE LENGTH OF LOWER MEMBER OF 'A' FRAME AS SHOWN FOR SLOPING GRADE USE 2x8 MEMBERS BUT INCREASE MUST NOT EXCEED 3'-6"

COOPERATIVE EXTENSION WORK IN
 AGRICULTURE AND HOME ECONOMICS
 STATE OF NORTH DAKOTA
 NORTH DAKOTA STATE UNIVERSITY
 OF AGRICULTURE AND APPLIED SCIENCE
 UNITED STATES DEPARTMENT OF AGRICULTURE COOPERATING

36'-0" A FRAME CABIN
 USDA 1963 EX-5965 SHEET 2 OF 3
 A small 3 1/2 x 11 drawing available



NOTE - PORCH CONSTRUCTION - 2" PLANKING ON 2x6" FRAMING - 2'-0" O.C.



COOPERATIVE EXTENSION WORK IN AGRICULTURE AND HOME ECONOMICS
 STATE OF NORTH DAKOTA
 NORTH DAKOTA STATE UNIVERSITY
 OF AGRICULTURE AND APPLIED SCIENCES
 UNITED STATES DEPARTMENT OF AGRICULTURE COOPERATING

36'-0" A FRAME CABIN

USDA 1963 EX-5965 SHEET 3 OF 3

A small 8 1/2" x 11" drawing available